

### *Capturing your family's memorable times.*

Life is always changing and if you have children you see it day to day. Capture the present with portraits by Louis Sabo and you will be able to hold onto those passing moments.



#### **LRS IIIMAGES Family Portraits**

Session \$150.<sup>00</sup> + tax

This session is available on location (outdoors) or inside with studio lighting. The session fee includes 15 poses. You receive 4x5 prints\* of each pose for selecting enlargements. (see below) Need more poses? A 30 pose session is available at \$180.<sup>00</sup> +tax

\* Digital proofs on CD can be substituted (\$25 discount on print packages listed inside brochure.)

#### **LRS IIIMAGES Senior Portraits**

Session \$90.<sup>00</sup> + tax

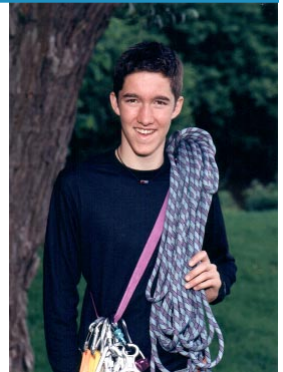
This session is available on location (outdoors) or in studio.

The session fee includes 15 poses.

You receive 4x5 prints\* of each pose for selecting enlargements. (see below)

A 30 pose session is available at \$130 +tax

\* Digital proofs on CD can be substituted.

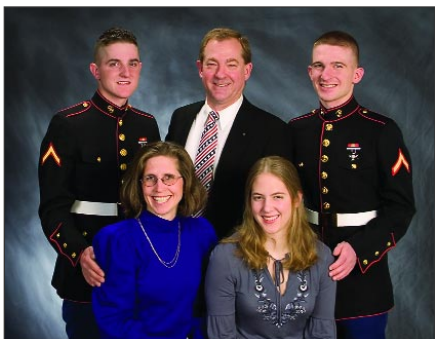


#### **LRS IIIMAGES Wedding Photography!**

Louis Sabo has been photographing weddings for the past 15 years and has developed his style of photography to provide a nice blend of candid moments and formal gatherings. Coverage prices start at \$850.00. Call to check availability and review images.

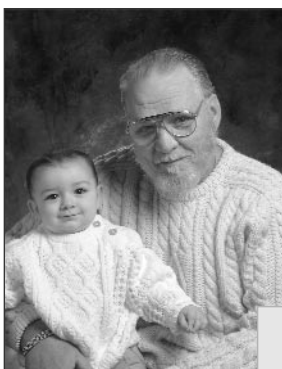
585-288-1159

Web: [www.lrsiiimages.com](http://www.lrsiiimages.com)



### Family Grand Package

A selection of prints that leaves no one out and gives you a handsome display print. This package offers nine 8 x10 units and one 11 x 14 print. Refer to the package print chart for unit print size options.\* Pick from enhancements listed below to make your prints ready for display. (FG9)



### Family & Friends Package

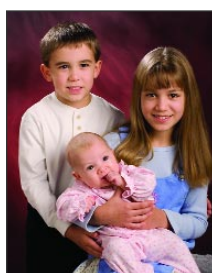
A print for all the family members and friends. This selection includes nine 8 x 10 units which can be divided into any assortment of print sizes of your choice. Refer to the package print chart for unit print size options.\* Print enhancements also available. (FF9)



### Family Plus

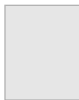
A package that provides enough pictures for the whole family. This selection offers five 8 x 10 units which can be divided up into

any assortment of print sizes of your choice. \* (FP5)



### Family Pack

This provides you with two 8 x 10 units which can be divided into many different size prints. The photo card is a nice option to add. Refer to the package print chart for unit print size options.\* (FP2)

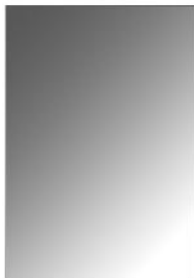


\* Prints can be added onto any package by indicating in the Add On Prints table on the order form.

### Package Print Description

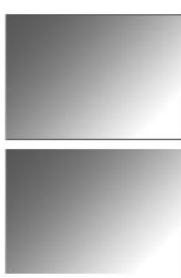
Print packages are offered in the form of units which are 8"x 10" print areas. Pick print sizes to fill each 8x10 area from the size selections listed below.

U81



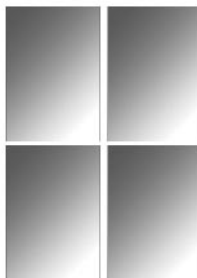
1 - 8 x 10

U57



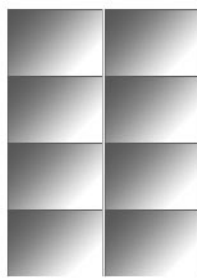
2 - 5 x 7

U45



4 - 4 x 5

U23



8 - Wallets

### Photo Card

The **Photo Card** is a nice way to share your family portrait with friends. A personalized message can be printed on the card. A great choice for Christmas cards, graduation, wedding and baby dedication announcements. Envelopes included with cards.\*\* (PC)

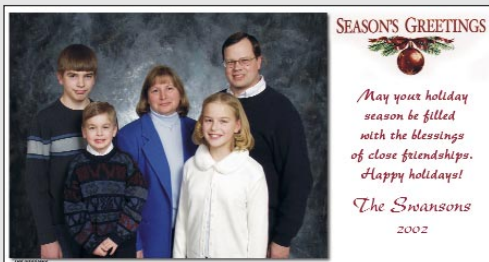


Photo Card 3.5" x 8" Choice of portrait w greeting.		
Qty	Per Print	Total
25	\$2.40	\$60.00
50	\$2.20	\$110.00
75	\$2.00	\$150.00
100	\$1.80	\$180.00

\*\* **LRS Portrait Advantage** - Order a portrait package and receive 20% off a Photo Card order.

### Print Enhancements

Print enhancements give your prints a protective finish and provide a stiff backing for framing or stand alone display of your portraits.

**Display** - Print is sprayed with a protection finish and mounted on matt board. (DB)

**Dura** - Print is sprayed with a textured protection finish and mounted on masonite board. (DD)

**Master** - Print is mounted on canvas to give your print texture and then it is sprayed with a protection finish. (11 x 14 & larger) (DM)

Images shown do not necessarily represent the style of portrait session offered.

*Portrait Enlargement choices  
for Family Portrait Sessions.***Portrait Enlargments**

Once your portrait session is completed and the proofs are available for viewing you have two options for enlargments from your portrait session. **The Portrait Package** option listed inside offers set quantities of prints which can be sized to your choosing. **Custom Display Prints** listed below have no minimum quantity and are 8 x 10 and larger.

**Custom Display Prints**

These prints are a handsome family showpieces which are discriminately printed for display and include a protective finish. Custom display prints are suitable for mounting and framing. Pricing is listed in the table below. No minimum quantity required to order These print orders have a three week turn around. (available with any portrait package)

**Custom Display Print Prices**

	<b>8 x 10</b>	<b>11 x 14</b>	<b>16 x 20</b>	<b>20 x 24</b>
First print price	\$40.00	\$75.00	\$115.00	\$160.00
2nd through 10th	\$25.00	\$50.00	\$75.00	\$100.00

**Order Forms**

LRS IIIMAGES print order forms are delivered with your portrait session proofs. Enter on the order form your negative/proof number listed on the back of the proof. Identify the package # or print size desired and send order form to LRS IIIMAGES. If you need more forms contact LRS IIIMAGES at the phone # listed above or goto

**[www.lrsiimages.com](http://www.lrsiimages.com)**, click on the word **links**.

**We accept cash, credit, or check payable to Louis R.Sabo III**

- Look inside for Print Package details. •